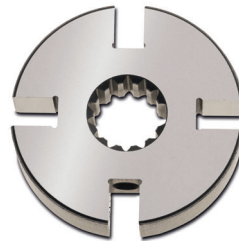
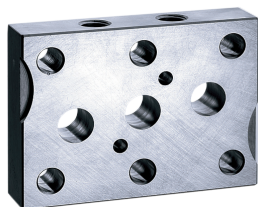
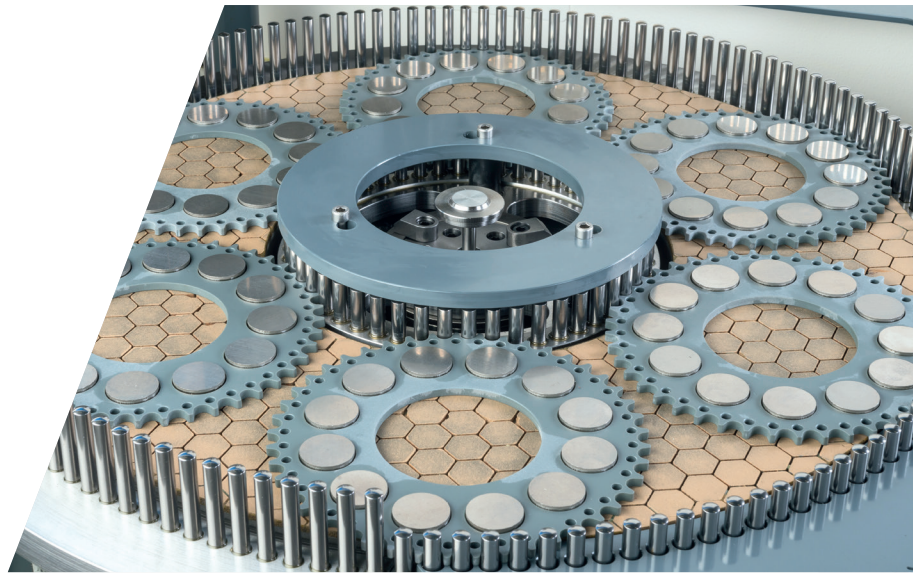


AC microLine® 535




DOUBLE-SIDE BATCH PROCESSING MACHINE



WORK PIECES UP TO
170 MM DIAMETER
50 MM THICKNESS



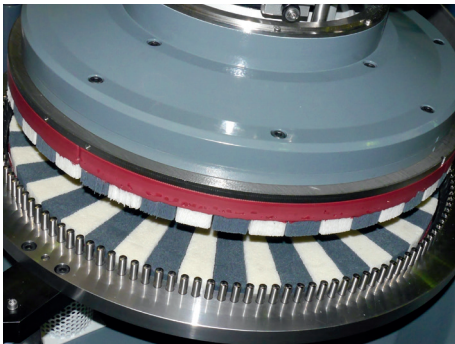
ALWAYS ON THE CUTTING EDGE

- 
 Designed for high-precision processing of small work pieces
- 
 Suited for fine grinding, lapping, polishing, and deburring
- 
 Optimum surface quality, flatness, thickness tolerance and plane parallelism with tightest tolerances on the work piece

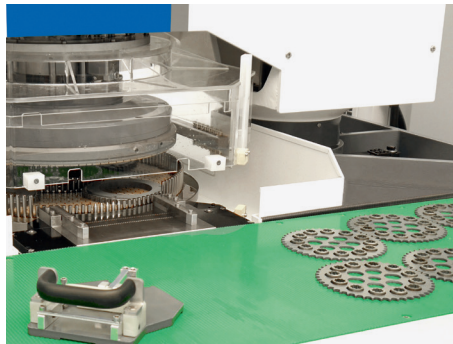
EXCELLENT PERFORMANCE AND FLEXIBILITY

HIGHLIGHTS AC microLine® 535

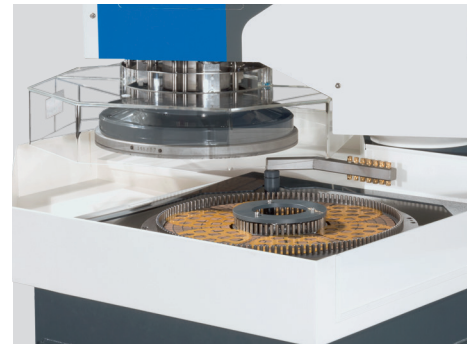
- ✔ Fast and ergonomic loading and unloading
- ✔ Upper working wheel can swivel out for total access to the process area
- ✔ Extreme temperature stabilization over the tool surface
- ✔ User friendly, intuitive operation
- ✔ Excellent machining results and precision
- ✔ Low operating costs
- ✔ Individual process development
- ✔ Easy to maintain
- ✔ High-precise non-contact measuring control
- ✔ Powerful drive technology
- ✔ High-precise pneumatic load system
- ✔ High production reliability
- ✔ Stable cast iron base frame
- ✔ Siemens PLC Control and Siemens KP1200 Comfort Panel
- ✔ Remote maintenance solution RangeCare® via mobile communications or VPN



AC 535-D with brushing wheels for double-side deburring of flat work pieces



AC 535-F with gap loading table



AC 535-F process area with swiveled out upper working wheel

TECHNICAL DATA	AC microLine® 535		
	F, D	F	L, P
Wheel diameter [mm]	534	630	534 / 562
Ring width [mm]	150	170	150 / 180
Max. load pressure [daN]	500 / 800	500 / 800	500 / 800
Upper / lower drive power [kW]	5.5 / 9.5	5.5 / 9.5	3.5 / 5.5
Upper / lower drive speed [rpm]	175 / 320	175 / 320	100 / 175
Center drive power [kW]	1.5	1.5	1.5
Center drive speed [rpm]	100	100	100
Working wheel cooling	wheel cooling optional	without wheel cooling	wheel cooling
Machine dimensions [H × W × D] [mm]	1900 × 1500 × 1500	1900 × 1500 × 1500	1900 × 1500 × 1500
Machine weight without switch cabinet [kg]	2000	2000	2000
Max. work piece thickness [mm]	50	50	50
Max. work piece diameter [mm]	150	170	150

GET IN TOUCH WITH US TODAY
TOGETHER WE WILL FIND A SOLUTION
FOR YOUR REQUIREMENTS

LAPMASTER WOLTERS GMBH

Phone: +49 4331 458 0

ac@lapmaster-wolters.de

www.lapmaster-wolters.de