

# MODEL 20

PRECISION OPEN FACE / PNEUMATIC LIFT FLAT LAPPING MACHINE



*Open face version (left), pneumatic lift version*



PLATE-DIAMETER 20" (508 MM)  
VERSIONS: 3 RINGS  
TYPE: SINGLE SIDED

## MEETING TODAY'S PRECISION SURFACING REQUIREMENTS

- ✓ Heavy duty carbon steel weldment base
- ✓ Wrap-around worktable facilitates parts handling
- ✓ Three (adjustable) conditioning rings with roller yoke and bearing assemblies facilitates in-process plate flatness control
- ✓ Abrasive feed system designed for water or oil based lapping slurries
- ✓ Automatic digital cycle timer
- ✓ Standard electrics: 110V, 1 ph, 60 Hz
- ✓ High torque drive unit with 1.0 HP / 0.75 kW motor and gear reducer

ACHIEVING HIGH STANDARDS OF FLATNESS AND SURFACE FINISH

**HIGHLIGHTS MODEL 20 (OPEN FACE / PNEUMATIC LIFT)**

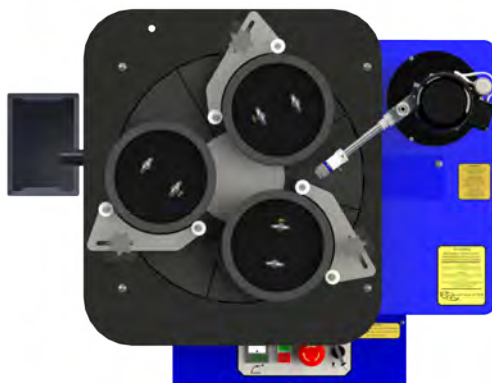
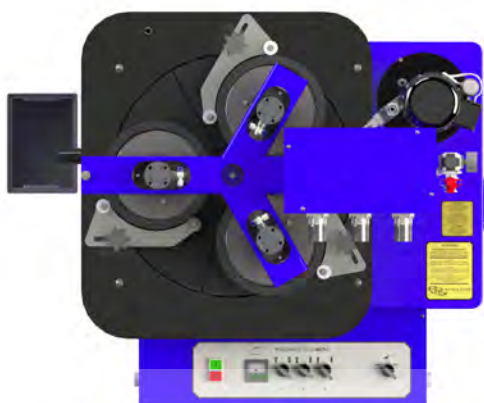
- ✔ Open lift version: removable waste container
- ✔ Pneumatic lift version: OSHA control circuitry and air logic which provides total operator safety through two-hand, anti-tie down operation of the pressure plates

**OPTIONAL FEATURES**

- ✔ Soft-start (to cushion start-up)
- ✔ Electronic variable speed drive, 0-70 rpm
- ✔ Diamond slurry dispensing systems
- ✔ Various lapping/polishing plates
- ✔ Non-standard voltages
- ✔ Custom machines and tooling

**STANDARD SPECIFICATIONS**

- High density, cast iron radially serrated lapping plate 508 mm O.D. x 127 mm I.D. / 20" O.D. x 5" I.D.
- Three high density cast iron serrated conditioning rings 229 mm O.D. x 191 mm I.D. / 9" O.D. x 7.5" I.D.
- Three high density, cast iron pressure plates with lifting eye-bolts 7<sup>7</sup>/<sub>16</sub>" dia. x 1<sup>1</sup>/<sub>2</sub>" thick / 189 mm dia. x 38 mm thick
- 20" / 508 mm hardened straight edge
- Three micarta workholder blank discs 7<sup>7</sup>/<sub>16</sub>" dia. x 1<sup>1</sup>/<sub>8</sub>" thick / 189 mm dia. x 3.2 mm thick
- Three pressure pads 7<sup>7</sup>/<sub>16</sub>" dia. x 1<sup>1</sup>/<sub>2</sub>" thick / 189 mm dia. x 13 mm thick
- Lap plate lifting tool
- Starter sample of Lapmaster abrasive
- Starter sample of Lapmaster vehicle
- Allen Wrench
- Operation and maintenance manual


*Open face version*
*Pneumatic lift version*
**APPROXIMATE WEIGHT**

- Open face:  
435 lbs / 196 kg
- Pneumatic lift:  
530 lbs / 239 kg

**APPROXIMATE DIMENSIONS**

- Open face:  
33.46" L x 30.31" W x 22.6" H
- 850 mm L x 770 mm W x 575 mm H
- Pneumatic lift:  
35.03" x 32.67" x 45.9" / 890 mm x 830 mm x 1167 mm

**GET IN TOUCH WITH US TODAY**  
**TOGETHER WE WILL FIND A SOLUTION**  
**FOR YOUR REQUIREMENTS**

**LAPMASTER WOLTERS**

Phone: 1 877 352 8637  
 sales@lapmaster-wolters.com  
 www.lapmaster-wolters.com