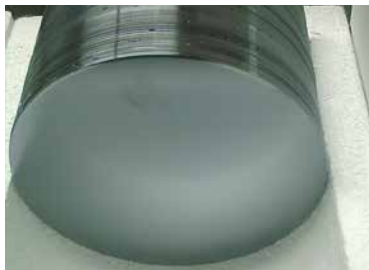
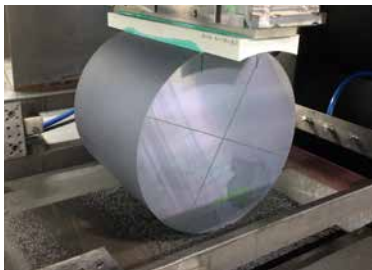


DS261

MULTI WIRE SAW



WORKPIECE DIMENSIONS:
MAX. Ø 12" × 400 MM



12" WAFER WITH HIGHEST SURFACE QUALITY

- ✓ Compact and solid construction
- ✓ High thermal and vibration stability
- ✓ Lowest warp, waviness and TTV values
- ✓ Excellent results in nano-topology

PRECISE SLURRY WIRE SAW FOR HIGH END INDUSTRIES

HIGHLIGHTS DS261

- ✓ New operator guided HMI and electrical system on Series 6 release
- ✓ Wide range of applications: silicon, quartz, gallium arsenide and other hard & brittle material in different dimensions
- ✓ Proven slurry technology and DW ready
- ✓ Optimized slurry temperature control
- ✓ 60-step recipe enables optimal process tuning
- ✓ Automated cutting process and perfect accessibility
- ✓ Optional workpiece orientation



Robust design for lowest warp



Perfect alignment for highest precision



Easy operation for higher yield

TECHNICAL DATA	DS261 FEATURES
Max. workpiece dimensions [mm]	Ø 305 mm × 400 (Ø 18" on request)
Wire speed [m/s]	15 (900 m/min)
Wire acceleration [m/s²]	2.5 (<6.5 s)
Min. wire diameter [µm]	120
Max. wire tension [N]	50
Wire guide roller axes distance [mm]	600
Cutting fluid	Slurry
Slurry tank [l]	175
Machine dimensions [L × W × H] [mm]	2980 × 4120 × 3340
Machine weight [kg]	12000

GET IN TOUCH WITH US TODAY
TOGETHER WE WILL FIND A SOLUTION
FOR YOUR REQUIREMENTS

LAPMASTER WOLTERS GERMANY

Phone: +49 4331 458 0
slicing@lapmaster-wolters.de
www.lapmaster-wolters.de

LAPMASTER WOLTERS UK

Phone Sales: +44 1752 891 600
sales@lapmaster-wolters.co.uk
www.lapmaster-wolters.co.uk

LAPMASTER WOLTERS USA

Phone: +1-877-352-8637
sales@lapmaster-wolters.com
www.lapmaster-wolters.com