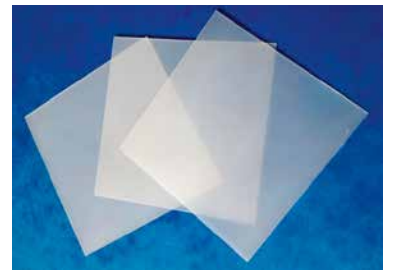
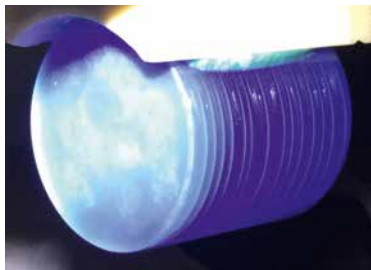


DW288S6

MULTI WIRE SAW



WORKPIECE DIMENSIONS:
MAX. Ø 6" × 650 MM



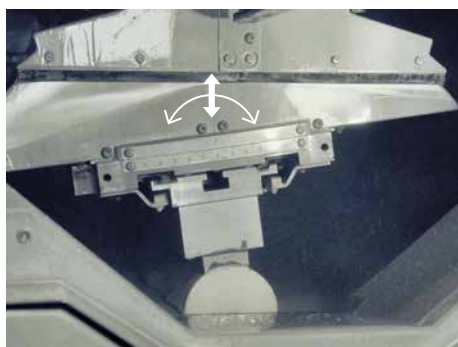
OPTIMIZED FOR HIGH VOLUME 6" WAFER PRODUCTION

- ✓ Increased throughput
- ✓ Highest precision and quality
- ✓ Robustness and durability
- ✓ Higher degree of automation

SMART SLICING TECHNOLOGY FOR SAPPHIRE, HARD AND BRITTLE MATERIALS

HIGHLIGHTS DW288S6

- ✓ Smallest axis distance:
Optimized for Ø 6"
- ✓ High capacity:
650 mm web length
- ✓ High throughput:
30 m/s wire speed,
10 m/s² acceleration
- ✓ Latest generation workpiece
rocking technology
- ✓ Adaptive feed
- ✓ New CF system:
Low maintenance heat exchanger,
stable temperature in entire system,
shortest pipe path
- ✓ Easy operation:
HMI on 15" touch screen,
production assistant, easy to train,
easy to use
- ✓ Recipe generator for 60-step recipe
- ✓ Ready for Industry 4.0
- ✓ Various options:
i.e. Diamond Wire Management
System (DWMS)



Optimized rocking for higher wafer quality



Longer load length for higher capacity



Easy operation for higher yield

TECHNICAL DATA	DW288S6 FEATURES
Max. workpiece dimensions [mm]	Ø 165 × 650
Wire speed [m/s]	30 (1800 m/min)
Wire acceleration [m/s ²]	10 (< 4 s)
Min. wire diameter [µm]	100
Max. wire tension [N]	45
Rocking principle	Rocking of workpiece
Rocking angle [°]	± 12
Wire guide roller axis distance [mm]	390
Cutting fluid tank [l]	240
Machine dimensions [L × W × H] [mm]	3700 × 1780 × 3010
Machine weight [kg]	11500

GET IN TOUCH WITH US TODAY
TOGETHER WE WILL FIND A SOLUTION
FOR YOUR REQUIREMENTS

LAPMASTER WOLTERS GERMANY
Phone: +49 4331 458 0
slicing@lapmaster-wolters.de
www.lapmaster-wolters.de

LAPMASTER WOLTERS UK
Phone Sales: +44 1752 891 600
sales@lapmaster-wolters.co.uk
www.lapmaster-wolters.co.uk

LAPMASTER WOLTERS USA
Phone: +1-877-352-8637
sales@lapmaster-wolters.com
www.lapmaster-wolters.com